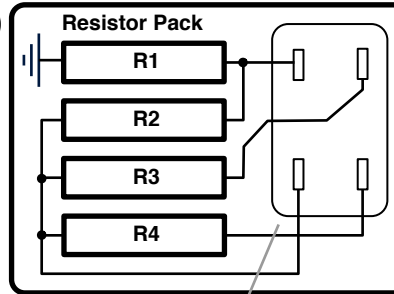
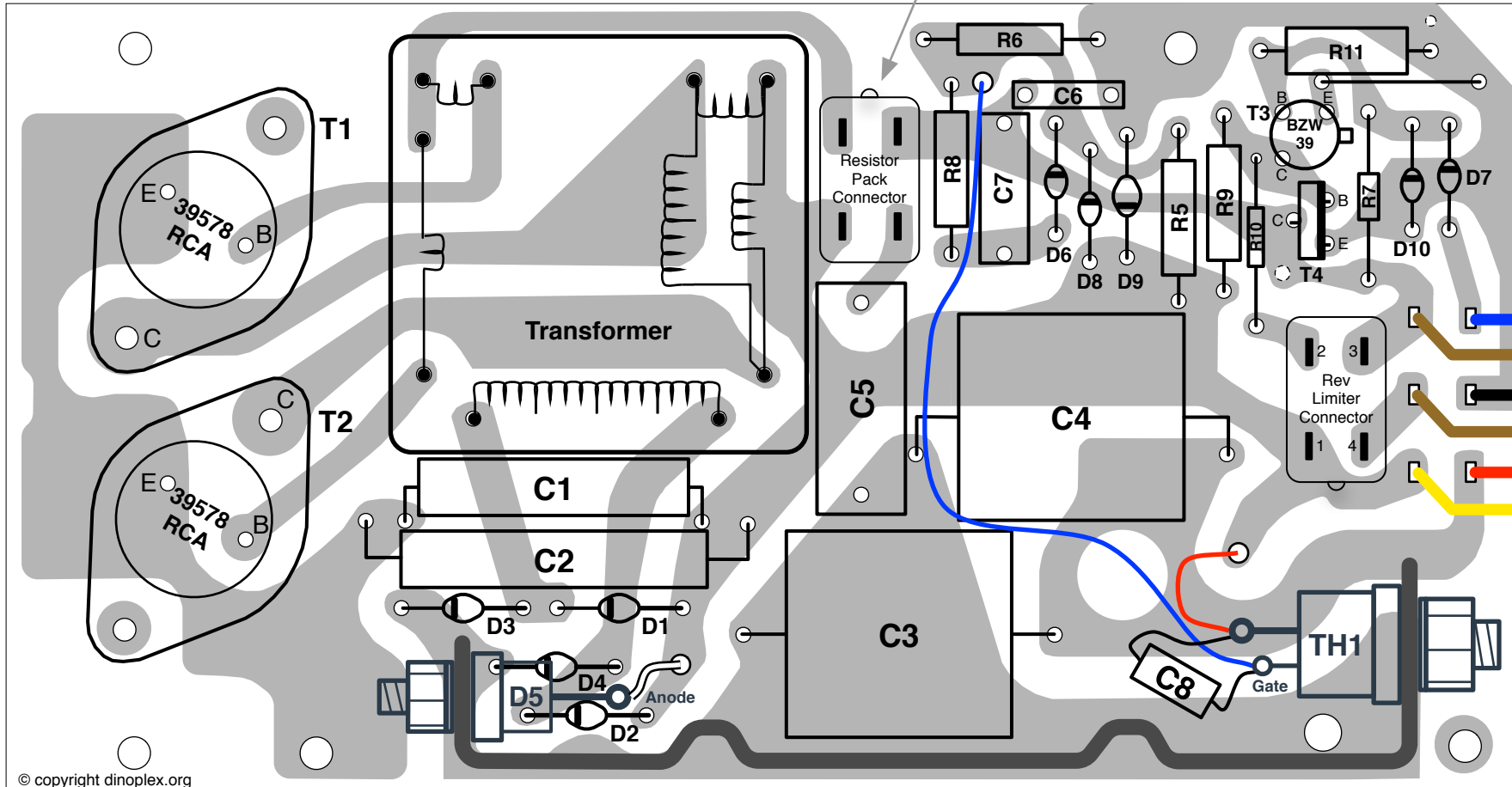


Magneti Marelli AEC104BK-660/780 (Magnetic Pickup) Components and PCB Diagram

V 1.1 11/2011 info@dinoplex.org, copyright www.dinoplex.org



R1: 3,2Ω 10%	R10: 390Ω 5%	C8: 330nF	D9: 1N5627
R2: 27Ω 10%	R11: 3300Ω 1%	D1: 1N5627	D10: GP Zener Diode
R3: 22Ω 10%	C1: 100uF	D2: 1N5627	T1: RCA 39578 (NPN)
R4: 27Ω 10%	C2: 220uF	D3: 1N5627	T2: RCA 39578 (NPN)
R5: 150Ω 5%	C3: 0,4uF 600V	D4: 1N5627	T3: BSW 39 (NPN)
R6: 330Ω 5%	C4: 0,4uF 600V	D5: M5 Diode	T4: RCA (Darl.NPN)
R7: 62KΩ 1%	C5: 100nf 600V	D6: GP Diode	TH1: 12F 800
R8: 200Ω 5%	C6: 33nF	D7: GP Diode	
R9: 680Ω 5%	C7: 330nF 250V	D8: GP Diode	



- Rev Limiter Connector**
1. +12V to Rev Limiter
 2. Trigger/RPM signal to Rev Limiter
 3. Spark disable signal from Rev Limiter
 4. Tacho out signal from Rev Limiter

1. Mag In
2. Mag GND
3. Coil 'K'
4. Tach Out
5. Tach Out via Rev Limiter
6. +12V In

AEC 104B-660/780 connector, Front View
(AMP Fastin-Faston Male 6 Pin)

