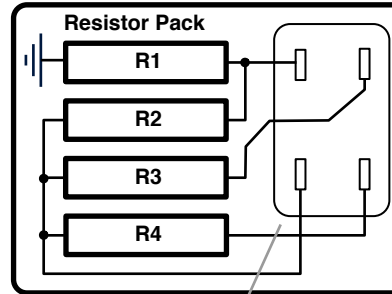


Magneti Marelli AEC104BK (Magnetic Pickup)

Components and PCB Diagram

V 1.0 11/2011 info@dinoplex.org, copyright www.dinoplex.org



R1: 3,2Ω 10%	R10: 1KΩ 5%	C8: 330nF	D9: 1N5627
R2: 27Ω 10%	R11: 3300Ω 1%	D1: 1N5627	D10: GP Zener Diode
R3: 22Ω 10%	C1: 100uF	D2: 1N5627	T1: RCA 39578 (NPN)
R4: 27Ω 10%	C2: 220uF	D3: 1N5627	T2: RCA 39578 (NPN)
R5: 150Ω 5%	C3: 0,4uF 600V	D4: 1N5627	T3: BSW 39 (NPN)
R6: 330Ω 5%	C4: 0,4uF 600V	D5: M5 Diode	T4: RCA (Darl.NPN)
R7: 62KΩ 1%	C5: 100nf 600V	D6: GP Diode	TH1: 12F 800
R8: 200Ω 5%	C6: 33nF	D7: GP Diode	
R9: 680Ω 5%	C7: 330nF 250V	D8: GP Diode	

