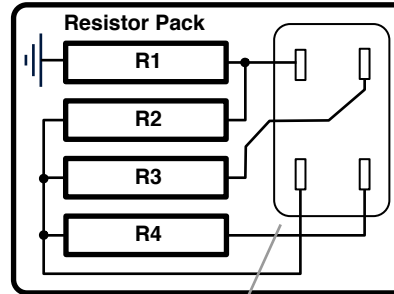


# Magneti Marelli AEC104BW (Points Trigger) Components and PCB Diagram

V 1.2 11/2011 info@dinoplex.org, copyright www.dinoplex.org



<b>R1:</b> 3,2Ω 10%	<b>R10:</b> 1KΩ 5%	<b>C8:</b> 330nF	<b>D10:</b> GP Zener Diode
<b>R2:</b> 27Ω 10%	<b>R11:</b> 3300Ω 1%	<b>D1:</b> 1N5627	<b>T1:</b> RCA 39578 (NPN)
<b>R3:</b> 22Ω 10%	<b>C1:</b> 100uF	<b>D2:</b> 1N5627	<b>T2:</b> RCA 39578 (NPN)
<b>R4:</b> 27Ω 10%	<b>C2:</b> 220uF	<b>D3:</b> 1N5627	<b>T3:</b> BSW 39 (NPN)
<b>R5:</b> 150Ω 5%	<b>C3:</b> 0,4uF 600V	<b>D4:</b> 1N5627	<b>T4:</b> RCA (Darl.NPN)
<b>R6:</b> 330Ω 5%	<b>C4:</b> 0,4uF 600V	<b>D5:</b> M5 Diode	<b>TH1:</b> 12F 800
<b>R7:</b> 62KΩ 1%	<b>C5:</b> 100nf 600V	<b>D6:</b> GP Diode	
<b>R8:</b> 200Ω 5%	<b>C6:</b> 33nF	<b>D8:</b> GP Diode	
<b>R9:</b> 680Ω 5%	<b>C7:</b> 330nF 250V	<b>D9:</b> 1N5627	

