

Magneti Marelli Microplex 120B (Ferrari Testarossa '85-'89, Ferrari 412 '85-'89)

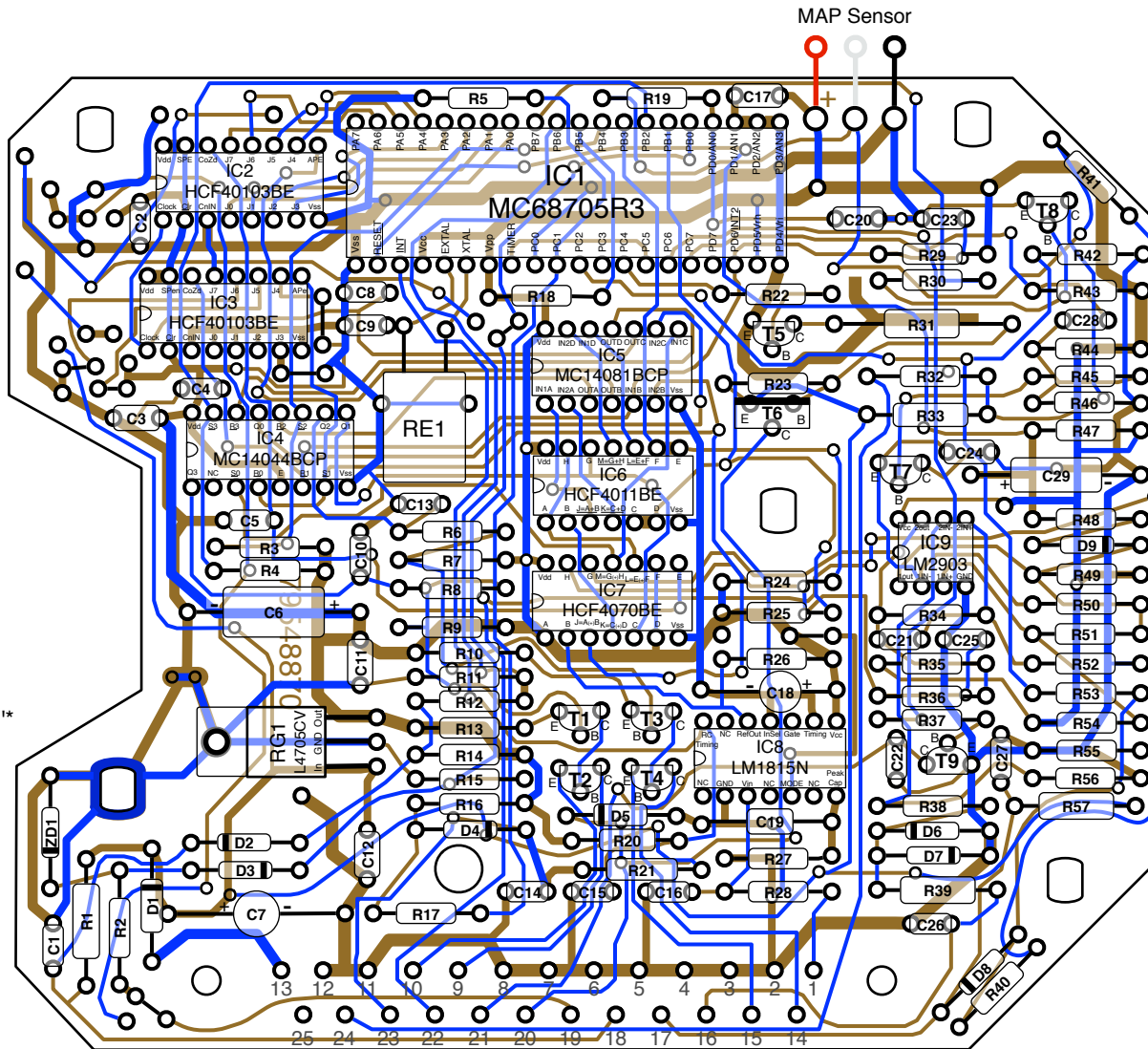
Circuit Board Diagram

V1.2, info@dinoplex.org, copyright 2015 www.dinoplex.org

Connector Pinout

- 1 TDC Sensor Plus
- 2 Ground
- 3 Ground
- 4 Ground
- 5 Ground
- 6 Ground
- 7 Ground
- 8 Ground
- 9 Ignition Trigger #1 Out
- 10 Ignition Trigger #1 Ground
- 11 Ground In
- 12 Ground
- 13 Battery Plus (Ignition Lock)
- 14 Ignition Trigger #2 Out
- 15 Ignition Trigger #2 Ground
- 16 RPM Sensor In
- 17 Map Select #1
- 18 Map Select #2
- 19 Throttle Switch
- 20 Cold Start Injector*
- 21 FerrariTester 'A'*
- 22 Vacuum Sensor Test Port
- 23 Map Select #3/FerrariTester 'C'*
- 24 Tacho Pulse Out
- 25 N/C

* Units build in 1990-1991



Transistors

- T1 IGN#1 Trigger Pre-Driver
- T2 IGN#1 Trigger Output
- T3 IGN#2 Trigger Pre-Driver
- T4 IGN#2 Trigger Output
- T5 Cold Start Injector Pre-Driver
- T6 Cold Start Injector Driver
- T7 Reset Circuit, to LM2903
- T8 Tacho Pulse Out
- T9 FerrariTester 'A' Serial Out

ICs

- IC1 Input Processing, Map Timing
- IC2 Down Counter Advance Timing
- IC3 Down Counter, preset to 48
- IC4 Ignition Pulse RS Latch
- IC5 Generates Clock and AP enable for Counter IC2 & IC3, Latch Reset 2&3 for IC4
- IC6 Preprocessing for IC5
- IC7 RPM Processing
- IC8 TDC Sensor
- IC9 RPM Sensor, IC1 Reset

