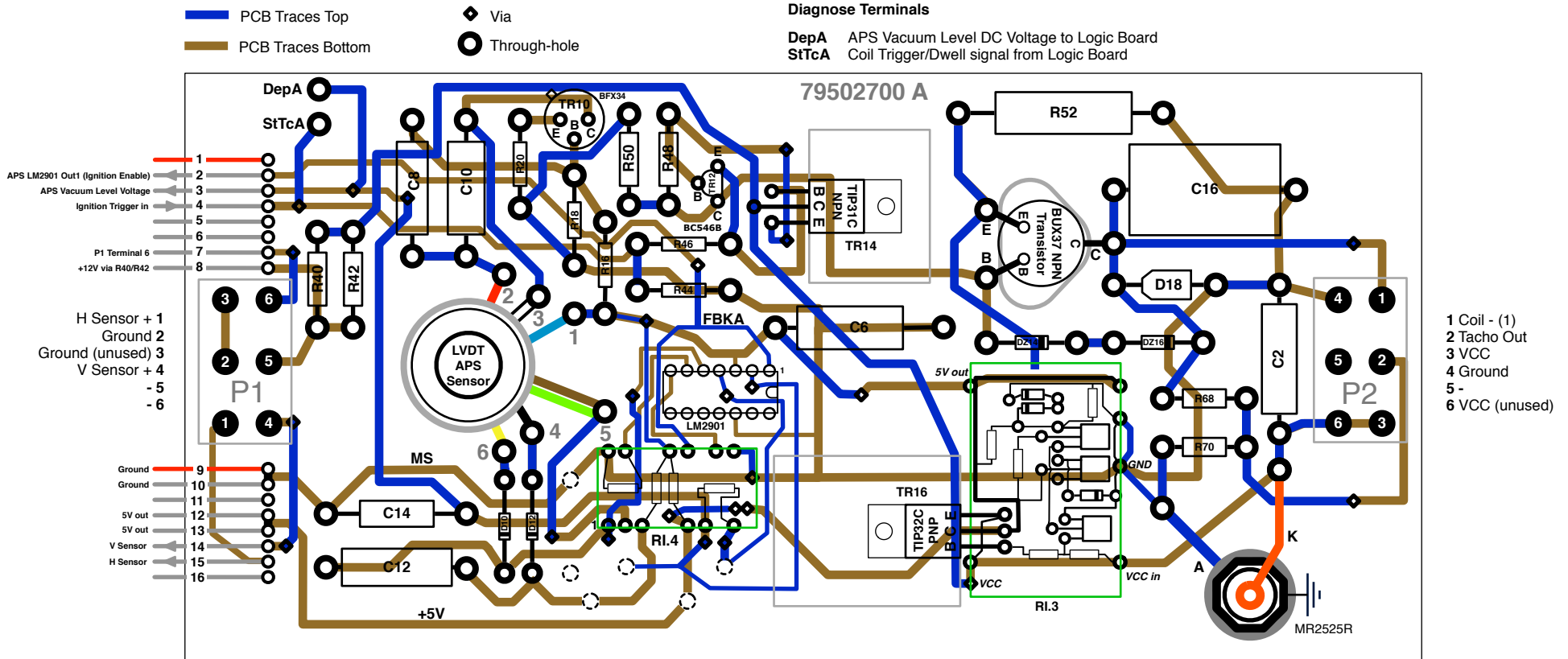


Marelli SAE 701 A Power/APS/Ignition PCB

Component and PCB Diagram

V 1.6 2/2013, info@dinoplex.org, copyright www.dinoplex.org



Components

CI.1	LM2901N	D10	1N4448	C2	1uF 5% 63V-	R16	4.7K 5%	RI.3	Discrete 5V DC voltage regulator
TR10	BFX34 (NPN)	D12	1N4448	C6	.33 20% 20V-	R18	4.7K 5%	RI.4	Signal conditioning circuit for the LM2901/APS Pressure Sensor
TR12	BC546B (NPN)	D18	SF4M3	C8	0.033 10% 250V-	R20	33.2, Dale 7833		
TR14	TIP31C (NPN)	D	Chassis MR2525R	C10	0.068 10% 250V-	R40	1K 5%		
TR16	TIP32C (PNP)	DZ14	150 ZS5	C12	1uF 5% 63V-	R42	1K 5%		
TO-3 Chassis	BUX37	DZ16	1M175	C14	4.7uF 35V-	R44	10K 5%		
				C16	.15 10% 630V-	R46	150 5%		
						R48	3.9K 5%		
						R50	100 5%		
						R52	0.1 Ω Shunt		
						R68	2.7K 5%		
						R70	39K 5%		